

Culture and Communities Committee

10.00am, Tuesday, 26 April 2022

City Centre Street Hockey and Skating Facility

Executive/routine Wards	Routine 5 – Inverleith, 9 – Fountainbridge/Craiglockhart, 11 – City Centre, 12 – Leith Walk, 13 – Leith, 14 – Craigentinny/Duddingston, 15 – Southside/Newington, 16 – Liberton/Gilmerton
Council Commitments	43 , 44

1. Recommendations

- 1.1 It is recommended that Culture and Communities Committee notes:
 - 1.1.1 The city centre and peripheral open space areas considered for a combined street hockey and skatepark facility and the assessment carried out;
 - 1.1.2 That the assessment of city centre open space areas did not identify a suitable site for a combined street hockey and skatepark facility; and
 - 1.1.3 The intention to carry out community engagement to seek views on the potential refurbishment/upgrade of the skatepark facility within Burdiehouse Valley Park which could incorporate a street hockey/multi-use games area.

Paul Lawrence

Executive Director of Place

Contact: Bob McAllister, Parks and Greenspaces

E-mail: bob.mcallister@edinburgh.gov.uk | Tel: 0131 529 7849

Report

City Centre Street Hockey and Skating Facility

2. Executive Summary

- 2.1 This report assesses the feasibility of a safe street hockey and skating facility on an open space site within Edinburgh's city centre. It also considers the suitability of potential peripheral sites. No suitable city centre sites were identified, however beyond the city centre, Burdiehouse Valley Park is considered the best option.

3. Background

- 3.1 A petition to Culture and Communities Committee on [15 June 2021](#) called on the Council to provide a skating and street hockey facility in the city centre. The petition proposed that there is suitable space in The Meadows.
- 3.2 The City of Edinburgh Council currently provides seven skateparks. These are located within Easter Drylaw Park, Trevelen Park, Sighthill Park, Saughton Park, Burdiehouse Burn Valley Park, Gyle Park and Muirhouse Linear Park. Street hockey is available at the Gyle and Saughton Park and on the many ball court / multi-use areas located throughout the city. There are pump tracks at Hunter's Hall Park and the Skelf Bike Park - near the Craggs Centre. In addition, an area of ground within North Fort Street Park is leased to Leith DIY for the construction of a skatepark.
- 3.3 The closest skatepark facility to the city centre is located within Easter Drylaw Park which is 3.7km from the centre. The closest combined skatepark and street hockey facility is at Saughton Park which is 4.3km from the city centre.

4. Main report

- 4.1 For the purpose of the assessment, a radius of 1.5km from the old central post office (now Waverley Gate) was used to define the city centre, which is a walking time of approximately 20 minutes. An analysis of publicly accessible recreational spaces identified 29 sites within the 1.5km radius (see Appendix 1).

- 4.2 SportsScotland recommends that a skatepark is at least 1,000m² and that a street hockey rink should be a similar size, but they can be smaller or larger and still be fit for purpose. For example, the street hockey rink at Gyle Park is 650m² and the skatepark at Saughton Park is 2,500m². An area of 1,500m² was used as a minimum size requirement for a combined facility.
- 4.3 Eight sites below the minimum size requirement (Hill Square Gardens, St. Patrick Square, Bothwell Street Gardens, Castle Terrace Gardens, Nicolson Square Garden, Bellevue Crescent Gardens North, Bellevue Crescent Gardens South and small sites near the Water of Leith) were removed from further consideration.
- 4.4 An analysis of Strengths, Weaknesses, Opportunities and Threats (SWOT) was completed for the remaining 21 sites in respect of the potential for street hockey and skatepark facilities (see Appendix 2). The summary findings are as follows:
- 4.4.1 **The Meadows, Calton Hill, Princes Street Gardens East and Princes Street Gardens West:** Section 22 of the City of Edinburgh District Council Order Confirmation Act 1991 places a restriction on the construction of permanent buildings in these public parks. A street hockey and skatepark facility qualifies as a permanent building and would therefore require an amendment to the 1991 Act. The necessary process seeking to secure such an amendment involves a lengthy and costly legal process with no guarantee of success. Therefore, these sites are not in scope.
- 4.4.2 **Granny's Green, Regent Road Park, Rocheid Path and London Road Gardens:** Given the predominant topography of steep slopes, limited level ground, narrow paths and poor access, these sites are deleted.
- 4.4.3 **Dunbar's Close Gardens, Deaconess Gardens, Bauks View, Hillside Crescent Gardens, Hopetoun Crescent Gardens, Gayfield Square, Dalmeny Street Park, Dumbiedykes Play Area:** These sites have a number of weaknesses but essentially are too small to retain their function as important city centre green spaces and accommodate a street hockey and skatepark facility. While Dalmeny Street Park has an existing hard surface suitable for street hockey, limitations on space for a skatepark and on-going noise complaints removes this site from scope.
- 4.4.4 **Montgomery Street Park, King George V Park and Pilrig Park:** All these parks could accommodate a street hockey and a skatepark facility. At just under 1km from the city centre, Montgomery Street Park is the closest. This park contains an existing hard-standing sports area that could be adapted to support street hockey. However, the proximity to residential properties and ongoing noise complaints make Montgomery Street Park unsuitable for a skatepark.
- 4.4.5 The topography within King George V Park and a mature tree canopy mean the site would require major alterations to accommodate a skatepark and street hockey facilities.
- 4.4.6 There are similar obstacles within Pilrig Park, with the additional difficulty of little level ground not currently being used for sport and play.

- 4.4.7 Montgomery Street Park, King George V Park and Pilrig Park have therefore been removed from consideration.
- 4.4.8 **George Square Gardens and Bristo Square:** Both sites are managed by the University of Edinburgh therefore development would require their support should the Council pursue these options. Skateboarders regularly use public spaces belonging to the University including Bristo Square and outside the Bayes Centre. While the University recognises the need for a city centre skatepark facility, its representatives have asked that these sites be removed from further consideration.
- 4.4.9 **Holyrood Park** is managed by Historic Environment Scotland (HES) as a scheduled ancient monument. It also contains two Sites of Special Scientific Interest. Discussions with representatives of HES suggested that development of a street hockey and skatepark would be highly unlikely to gain approval, and so the Park has been removed from further consideration.
- 4.5 An analysis of open spaces peripheral to the city centre identified eight further sites highlighted in green within Appendix 3. In addition and highlighted in purple are sites that have a wheels facility (proposed at North Fort Street only).
- 4.6 Appendix 4 presents a street hockey and skatepark SWOT analysis for the peripheral sites and findings indicated the following:
- 4.6.1 **Burdiehouse Valley Park:** A 5.9 hectare park 6km to the south of the city centre which follows the valley of the burn and is composed of green trails, a play area and a skatepark. The skatepark is in very poor condition and a refurbishment / upgrade is urgently required to improve the functionality and play value of the facility.
- 4.6.2 **Bruntsfield Links:** A 14.6-hectare park 2km from the city centre. As with the Meadows, Calton Hill and Princes Street Gardens, the 1991 Act prohibits development.
- 4.6.3 **Leith Links:** A 19.4-hectare park 3km east of the city centre. While there is potential for the redevelopment of the former bowling green area as a street hockey and skatepark facility, the 1991 Act also prohibits development in the park. A master planning exercise is underway to guide the park's future amenity and provision for a street hockey and skatepark facility will be considered along with the 1991 Act restrictions.
- 4.6.4 **Inch Park:** A 24.7-hectare park 3km south of the city centre. The park contains several suitable areas, however a recent master planning consultation did not identify demand for a street hockey and skatepark facility.
- 4.6.5 **Harrison Park:** A 7.1-hectare community park 3km west of the city centre with leisure, football and play areas, a community garden and walks linking to the canal towpath. The park has limited open space areas that could be developed into a street hockey and skatepark facility.

- 4.6.6 **Lochend Park:** An 8.5-hectare park 3.4km east of the city centre with walks, a small play area, loch and an all-weather football pitch. The park contains an area of ground to the south west that could accommodate a street hockey and skatepark facility however access, drainage and uneven topography would present substantial cost and design challenges.
- 4.6.7 **Inverleith Park:** A 22-hectare park 4km north of the city centre with tree lined paths, pond, sports pitches and pavilions, children's play, ornamental sundial garden, bowling, tennis, petanque and a large allotment area. The construction of a skatepark was proposed in 2006 but rejected by the Council following community consultation and a Council vote.
- 4.6.8 **Meadowfield Park:** A 23.5-hectare park 2km east of the city centre with a small play area and walks. It is situated east of Arthur's Seat and therefore more distant from the city centre than the linear distance would suggest.

5. Next Steps

- 5.1 It is proposed that officers undertake community engagement on the potential to upgrade the skatepark facility within Burdiehouse Valley Park.
- 5.2 Officers will also continue to progress master planning exercises for Inch Park, Leith Links and Inverleith Park.

6. Financial impact

- 6.1 The development of a street hockey and skatepark facility will vary depending on location, design and size with the cost for a medium sized facility is estimated at £200,000.

7. Stakeholder/Community Impact

- 7.1 Skating/street hockey are relatively inexpensive recreational activities that have many associated health, wellbeing and social benefits; however they can result in complaints from residents and other park users regarding noise and anti-social behaviour.

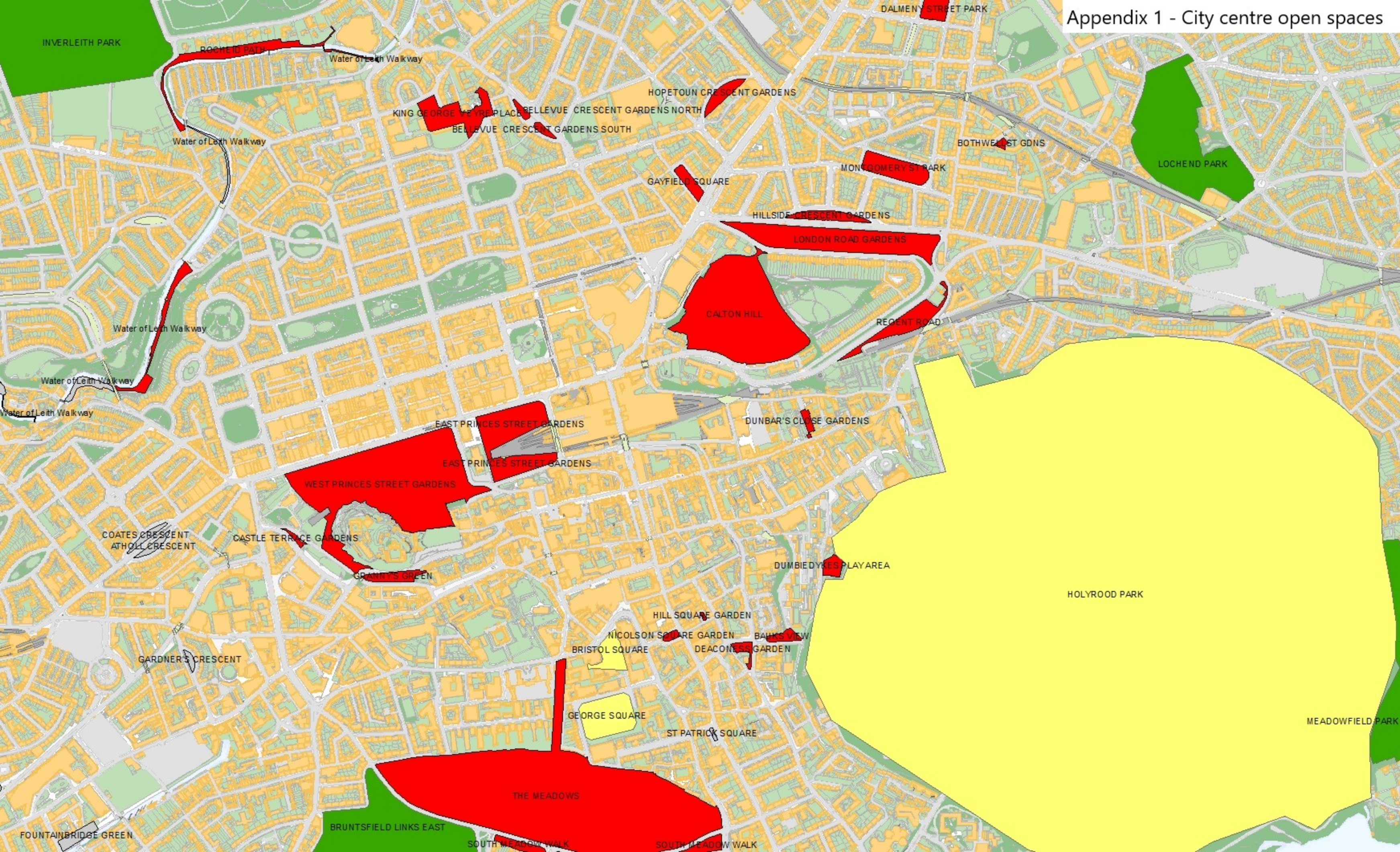
8. Background reading/external references

- 8.1 None.

9. Appendices

- 9.1 Appendix 1 – City centre open spaces.
- 9.2 Appendix 2 – City centre sites street hockey and skatepark SWOT analysis.
- 9.3 Appendix 3 – City open spaces.
- 9.4 Appendix 4 – Peripheral sites street hockey and skatepark SWOT analysis.

Appendix 1 - City centre open spaces



Appendix 2 - City centre sites street hockey and skatepark SWOT analysis

Site 1: Meadows

Size: 247,000m²

Linear distance from city centre: 1.0km

Description: Large open space featuring a café, play areas, events area, tennis courts, croquet, toilets and cricket grounds.

Strengths	Weaknesses	Opportunities	Threats
Site size - large openspace area Council owned City centre location Topography relatively level Sufficient area for a combined facility Play area	1991 Confirmation Act prohibits development Mature tree canopy Site used for large scale public events Rejected following previous consultation	Improved play value Facility can become a hub for a health community Move skaters off the street Create a safe environment Health benefits Reduced damage to private property	Incompatible activities People not liking the Skatepark Misbehaviour Conflict with current users Negative media coverage

Site 2: Calton Hill

Size: 94,000 m²

Linear distance from city centre: 0.3km

Description: Large rock knoll, café, historic monuments, observatory and 360 city views.

Strengths	Weaknesses	Opportunities	Threats
Site size - large openspace area Council owned City centre location Sufficient area for a combined facility	1991 Confirmation Act prohibits development Historic monuments Steep slopes Laid out as a wilderness area Remote Access	Improved play value Facility can become a hub for a health community Move skaters off the street Create a safe environment Health benefits Reduced damage to private property	Incompatible activities People not liking the Skatepark Misbehaviour Conflict with current users Negative media coverage

Site 3: East Princes Street Gardens

Size: 32,000m²

Linear distance from city centre: 0.5km

Description: Gardens, events areas, monuments, café and refreshment kiosk

Strengths	Weaknesses	Opportunities	Threats
Site size - large public gardens Council owned City centre location Topography relatively level	1991 Confirmation Act prohibits development Mature tree canopy Used for large scale public events Principally laid out as a public garden Historic monuments	Improved play value Facility can become a hub for a health community Move skaters off the street Create a safe environment Health benefits Reduced damage to private property	Incompatible activities People not liking the Skatepark Misbehaviour Conflict with current users Negative media coverage

Site 4: West Princes Street Gardens

Size: 121,000m²

Linear distance from city centre: 0.8km

Description: Gardens, events areas, monuments, café, band stand, play area

Strengths	Weaknesses	Opportunities	Threats
City centre location Council owned Site size - large public garden area Topography relatively level Play area	1991 Confirmation Act prohibits development Mature tree canopy Used for large scale public events Principally laid out as a public garden	Improved play value Facility can become a hub for a health community Move skaters off the street Create a safe environment Health benefits Reduced damage to private property	Incompatible activities People not liking the Skatepark Misbehaviour Conflict with current users Negative media coverage

Site 5: Granny's Green

Size: 5,000m²

Linear distance from city centre: 1.2km

Appendix 2 - City centre sites street hockey and skatepark SWOT analysis

Description: Garden / open space area

Strengths	Weaknesses	Opportunities	Threats
City centre location Council owned	Steep slopes Access Small space Laid out as a quiet green space	Improved play value Facility can become a hub for a health community Move skaters off the street Create a safe environment Health benefits Reduced damage to private property	Incompatible activities People not liking the Skatepark Misbehaviour Conflict with current users Negative media coverage

Site 6: Regent Road Park

Size: 13,000m²

Linear distance from city centre: 0.5km

Description: Small park with city views and bowling green

Strengths	Weaknesses	Opportunities	Threats
City centre location Council owned	Steep slopes Limited suitable level ground Monument Mature tree canopy Heriot Trust owned	Improved play value Facility can become a hub for a health community Move skaters off the street Create a safe environment Health benefits Reduced damage to private property	Incompatible activities People not liking the Skatepark Misbehaviour Conflict with current users Negative media coverage

Site 7: Rocheid Path

Size: 14,000m²

Linear distance from city centre: 1.8km

Description: Garden / open space area

Strengths	Weaknesses	Opportunities	Threats
City centre location Council owned	Steep slopes Distance from city centre Ground liable to flooding Extensive mature tree canopy Wilderness area Access	Improved play value Facility can become a hub for a health community Move skaters off the street Create a safe environment Health benefits Reduced damage to private property	Incompatible activities People not liking the Skatepark Misbehaviour Conflict with current users Negative media coverage

Site 8: London Road Gardens

Size: 14,000m²

Linear distance from city centre: 0.5km

Description: Woodland area with café/restaurant

Strengths	Weaknesses	Opportunities	Threats
City centre location Council managed	Steep slope Limited suitable level ground Heriot Trust owned Mature tree canopy Access	Improved play value Facility can become a hub for a health community Move skaters off the street Create a safe environment Health benefits Reduced damage to private property	Incompatible activities People not liking the Skatepark Misbehaviour Conflict with current users Negative media coverage

Site 9: Dunbar's Close Gardens

Size: 17,000m²

Linear distance from city centre: 0.3km

Appendix 2 - City centre sites street hockey and skatepark SWOT analysis

Small ornamental garden used for occasional events

Strengths	Weaknesses	Opportunities	Threats
Council owned City centre location	Small space Shrubs / Trees Near residential properties Historic ornamental garden Used as a wedding ceremony venue	Improved play value Facility can become a hub for a health community Move skaters off the street Create a safe environment Health benefits Reduced damage to private property	Incompatible activities People not liking the Skatepark Misbehaviour Conflict with current users Negative media coverage

Site 10: Deaconess Gardens

Size: 1,700m²

Linear distance from city centre: 0.8km

Description: Small gardens surrounded by a chain link fence and bordered by spring flowering cherry trees.

Strengths	Weaknesses	Opportunities	Threats
City centre location Topography relatively level Near medical centre Council owned	Shrub / trees / bedding areas Near residential properties Small space Laid out as a public garden / quiet green space	Improved play value Facility can become a hub for a health community Move skaters off the street Create a safe environment Health benefits Reduced damage to private property	Incompatible activities People not liking the Skatepark Misbehaviour Conflict with current users Negative media coverage

Site 11: Bauks View

Size: 2,700m²

Linear distance from city centre: 0.8km

Description: Small urban wildlife garden and haven for wildlife in the city centre with view of Salisbury Crags.

Strengths	Weaknesses	Opportunities	Threats
Council owned City centre location Near sports centre Near Skelf pump track	Near residential properties Mature tree canopy Small space Wildlife area Shrub / tree areas Laid out as a wilderness / quiet green space	Improved play value Facility can become a hub for a health community Move skaters off the street Create a safe environment Health benefits Reduced damage to private property	Incompatible activities People not liking the Skatepark Misbehaviour Conflict with current users Negative media coverage

Site 12: Hopetoun Crescent Gardens

Size: 4,800m²

Linear distance from city centre: 0.8km

Description: Small urban garden and haven for wildlife in the city centre

Strengths	Weaknesses	Opportunities	Threats
Council owned City centre location	Near residential properties Mature tree canopy Small space Wildlife area Laid out as a public garden / quiet green space	Improved play value Facility can become a hub for a health community Move skaters off the street Create a safe environment Health benefits Reduced damage to private property	Incompatible activities People not liking the Skatepark Misbehaviour Conflict with current users Negative media coverage

Site 13: Gayfield Square

Size: 3,800m²

Linear distance from city centre: 0.6km

Appendix 2 - City centre sites street hockey and skatepark SWOT analysis

Description: Small urban garden and haven for wildlife in the city centre

Strengths	Weaknesses	Opportunities	Threats
Council owned City centre location Near police station	Near residential properties Mature tree canopy Small space Laid out as a public garden & quiet green space Exits onto roads	Improved play value Facility can become a hub for a health community Move skaters off the street Create a safe environment Health benefits Reduced damage to private property	Incompatible activities People not liking the Skatepark Misbehaviour Conflict with current users Negative media coverage

Site 14: Dalmeny Street Park

Size: 8,000m2

Linear distance from city centre: 1.4km

Description: Small urban park split between garden area and play / ball court area

Strengths	Weaknesses	Opportunities	Threats
Council owned City centre location Ball court area available for street hockey Near other recreational facilities Play area	Near residential properties Mature tree canopy Small space Existing noise complaints Flooding Distance from city centre	Improved play value Facility can become a hub for a health community Move skaters off the street Create a safe environment Health benefits Reduced damage to private property	Incompatible activities People not liking the Skatepark Misbehaviour Conflict with current users Negative media coverage

Site 15: Dumbiedyke Play Area

Size: 3,300m2

Linear distance from city centre: 0.7km

Description: A play area dated and in need of upgrade.

Strengths	Weaknesses	Opportunities	Threats
Bounded by parkland to east Council owned City centre location Next to Braidwood Centre (Cummunity hub) Near Canongate Youth Club Play area	Slopes to east and north Existing play area requires development Near residential properties Small space	Improved play value Facility can become a hub for a health community Move skaters off the street Create a safe environment Health benefits Reduced damage to private property	Incompatible activities People not liking the Skatepark Misbehaviour Conflict with current users Negative media coverage

Site 16: Montgomery Street Park

Size: 13,000m2

Linear distance from city centre: 0.8km

Description: A community park with a play and hard surface area play area is currently being redeveloped

Strengths	Weaknesses	Opportunities	Threats
Council owned City centre location Play area Sufficient area for a combined facility Existing engagement favours skatepark	Near residential properties	Improved play value Facility can become a hub for a health community Move skaters off the site Create a safe environment Health benefits Reduced damage to private property	Incompatible activities People not liking the Skatepark Misbehaviour Conflict with current users Negative media coverage

Site 17: King George V Park, Eyre Pl

Size: 17,000m2

Linear distance from city centre: 1.0km

Appendix 2 - City centre sites street hockey and skatepark SWOT analysis

Description: A community park with toddler and under 14 play areas

Strengths	Weaknesses	Opportunities	Threats
Council owned City centre location Play areas Distance from residential properties Size - community park	Distance from city centre Poor visibility Mature tree canopy Suitable area laid out as a quiet green space	Improved play value Facility can become a hub for a health community Move skaters off the site Create a safe environment Health benefits Reduced damage to private property	Incompatible activities People not liking the Skatepark Misbehaviour Conflict with current users Negative media coverage

Site 18: Pilrig Park

Size: 13,000m²

Linear distance from city centre: 1.4km

Description: A community park with a play and hard surface areas.

Strengths	Weaknesses	Opportunities	Threats
Council owned City centre location Play areas Size - community park Distance from residential properties	Distance from city centre Suitable areas already used for play & sports Services running through park prevents excavation Mature tree canopy	Improved play value Facility can become a hub for a health community Move skaters off the site Create a safe environment Health benefits Reduced damage to private property	Incompatible activities People not liking the Skatepark Misbehaviour Conflict with current users Negative media coverage

Site 19: Holyrood Park (Queen's Park)

Size: 2,630,000m²

Linear distance from city centre: 0.9km

Description: Royal park consisting of hills, glens, ridges, cliffs and gorse.

Strengths	Weaknesses	Opportunities	Threats
City centre location Distance from residential properties Site size - large parkland area Quiet location Topography many areas relatively level	Managed by Historic Environment Scotland Protected under the Parks Reg Act 1872-1974 Protected under Holyrood Park Reg 1971+ Scheduled ancient monument 2 SSSI	Improved play value Facility can become a hub for a health community Move skaters off the site Create a safe environment Health benefits Reduced damage to private property	Incompatible activities People not liking the Skatepark Misbehaviour Conflict with current users Negative media coverage

Site 20: George Square Gardens

Size: 19,000m²

Linear distance from city centre: 1.0km

Description: Private owned gardens usually available for public use.

Strengths	Weaknesses	Opportunities	Threats
Site size Topography relatively level City centre location	Privately owned Shrub / Tree areas Near residential/university properties Wildlife area Laid out as a public garden & quiet green space Conflict with other users	Improved play value Facility can become a hub for a health community Move skaters off the site Create a safe environment Health benefits Reduced damage to private property	Incompatible activities People not liking the Skatepark Misbehaviour Conflict with current users Negative media coverage

Site 21: Bristol Square

Size: 8,000m²

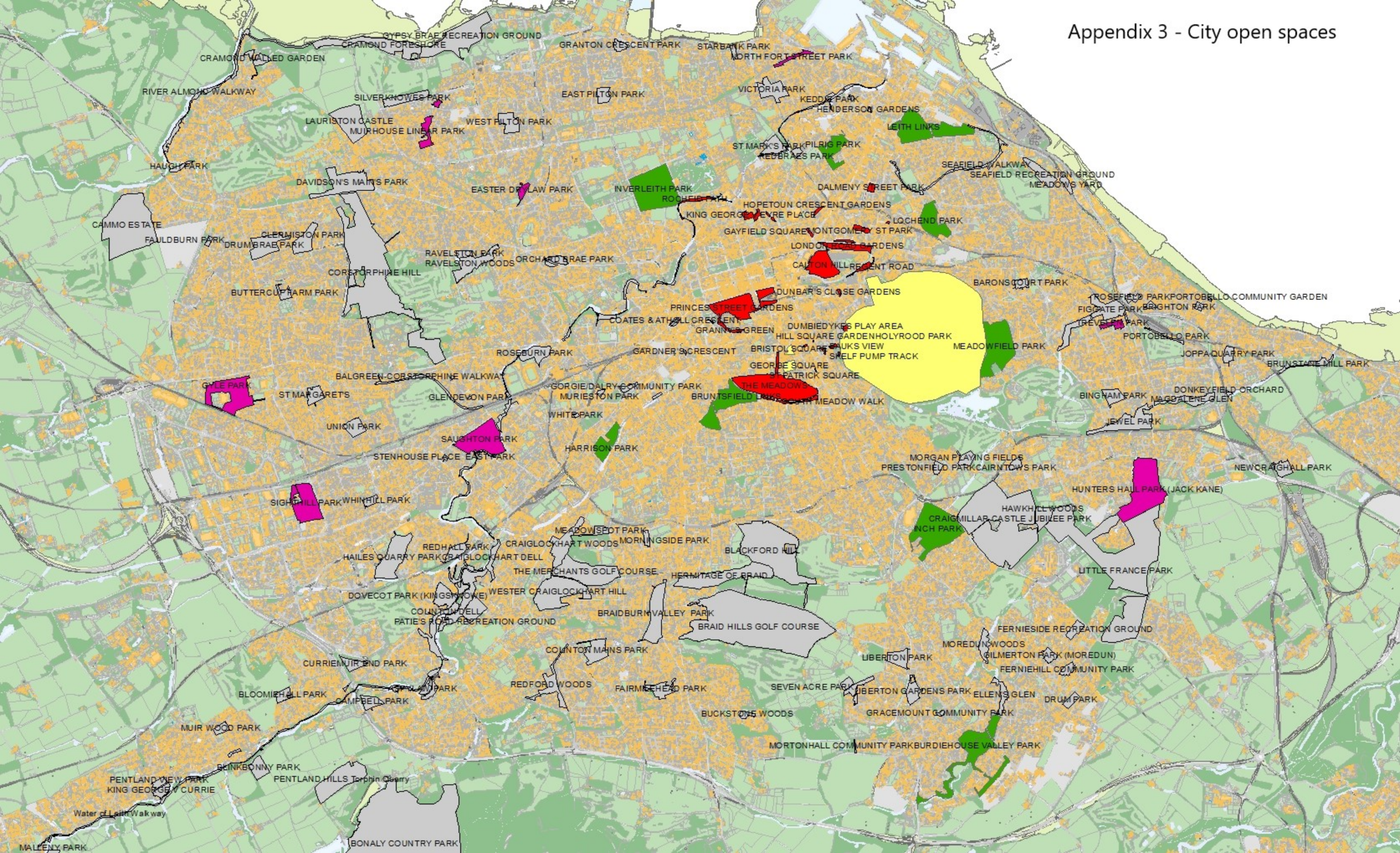
Linear distance from city centre: 0.6km

Description: Private owned civil square usually available for public use.

Appendix 2 - City centre sites street hockey and skatepark SWOT analysis

Strengths	Weaknesses	Opportunities	Threats
Topography relatively level City centre location	Privately owned Small space Near residential/university properties Conflict with other users	Improved play value Facility can become a hub for a health community Move skaters off the site Create a safe environment Health benefits Reduced damage to private property	Incompatible activities People not liking the Skatepark Misbehaviour Conflict with current users Negative media coverage

Appendix 3 - City open spaces



Appendix 4 - Peripheral sites street hockey and skatepark SWOT analysis

Site 22: Burdiehouse Valley Park Size: 227,000m² Linear distance from city centre: 6.0km

Description: Openspace country style park feature walka, play and skate park areas.

Strengths	Weaknesses	Opportunities	Threats
Site size - large parkland area Council owned Play area Existing skate park can be improved	Distance from city centre Topography slopes	Improved play value Facility can become a hub for a health community Move skaters off the street Create a safe environment Health benefits Reduced damage to private property	Incompatible activities People not liking the Skatepark Misbehaviour Conflict with current users Negative media coverage

Site 23: Bruntsfield Links Size: 140,000m² Linear distance from city centre: 1.9km

Description: Openspace area that links to the Meadows and features short hole golf and toilets.

Strengths	Weaknesses	Opportunities	Threats
Site size - large parkland area Council owned Play area	1991 Confirmation Act prohibits development Topography slopes Historic use as a short hole golf course Area already being used for play & sports Distance from city centre	Improved play value Facility can become a hub for a health community Move skaters off the street Create a safe environment Health benefits Reduced damage to private property	Incompatible activities People not liking the Skatepark Misbehaviour Conflict with current users Negative media coverage

Site 24: Leith Links Size: 190,000m² Linear distance from city centre: 2.2km

Description: Openspace area featuring including cricket, football, tennis, play areas and allotments

Strengths	Weaknesses	Opportunities	Threats
Site size - large parkland area Council owned Topography relatively level Former bowling green site available Play area Demand for a skatepark identified during Master	1991 Confirmation Act prohibits development Distance from city centre	Improved play value Facility can become a hub for a health community Move skaters off the street Create a safe environment Health benefits	Incompatible activities People not liking the Skatepark Misbehaviour Conflict with current users Negative media coverage
Planning consultation		Reduced damage to private property	

Site 25: Inch Park Size: 247,000m² Linear distance from city centre: 3.1km

Description: Large community park providing a range of recreational facilities, pitches, play areas, river walks and cycle paths.

Strengths	Weaknesses	Opportunities	Threats
Site size, large park land area Topography relatively level Council owned Community Centre Play area	Distance from city centre Flooding risk No demand for a skatepark identified during Master Planning consultation	Improved play value Facility can become a hub for a health community Move skaters off the street Create a safe environment Health benefits Reduced damage to private property	Incompatible activities People not liking the Skatepark Misbehaviour Conflict with current users Negative media coverage

Appendix 4 - Peripheral sites street hockey and skatepark SWOT analysis

Site 22: Burdiehouse Valley Park Size: 227,000m² Linear distance from city centre: 6.0km

Site 27: Lochend Park Size: 247,000m² Linear distance from city centre: 3.1km

Description: Large community park providing a range of recreational facilities, pitches, play areas, river walks and cycle paths.

Strengths	Weaknesses	Opportunities	Threats
Site size, large park land area Topography relatively level Council owned Play area	Distance from city centre Flooding risk	Improved play value Facility can become a hub for a health community Move skaters off the street Create a safe environment Health benefits Reduced damage to private property	Incompatible activities People not liking the Skatepark Misbehaviour Conflict with current users Negative media coverage

Site 28: Harrison Park Size: 70,000m² Linear distance from city centre: 2.9km

Description: A community park providing a range of recreational facilities, pitches, play areas, cycle paths and a formal garden.

Strengths	Weaknesses	Opportunities	Threats
Existing hard surface area to East Topography of site relatively level Council owned Level old bowling green area near canal Play area	Shrub / tree areas Distance from city centre Residential properties Possible area already being for community garden Community garden has area allocated Maintenance access route	Improved play value Facility can become a hub for a health community Move skaters off the street Create a safe environment Health benefits Reduced damage to private property	Incompatible activities People not liking the Skatepark Misbehaviour Conflict with current users Negative media coverage

Site 29: Inverleith Park Size: 219,000m² Linear distance from city centre: 1.8km

Description: Destination park with pond, sports pitches and pavilions, tennis, bowling, sundial garden and childrens play area.

Strengths	Weaknesses	Opportunities	Threats
Site size, large park land area Topography of site relatively level Council owned Play area	Shrub / tree areas Distance from city centre Residential properties Flooding risk Skatepark rejected by Council (2006) No demand for a skatepark identified during Master Planning consultation	Improved play value Facility can become a hub for a health community Move skaters off the street Create a safe environment Health benefits Reduced damage to private property	Incompatible activities People not liking the Skatepark Misbehaviour Conflict with current users Negative media coverage

Site 28: Meadowfield Park Size: 234,900m² Linear distance from city centre: 2km

Description: Destination park with pond, sports pitches and pavilions, tennis, bowling, sundial garden and childrens play area.

Strengths	Weaknesses	Opportunities	Threats
Site size, large park land area Council owned Play area	Topography slopes Distance from city centre	Improved play value Facility can become a hub for a health community Move skaters off the street Create a safe environment Health benefits Reduced damage to private property	Incompatible activities People not liking the Skatepark Misbehaviour Conflict with current users Negative media coverage